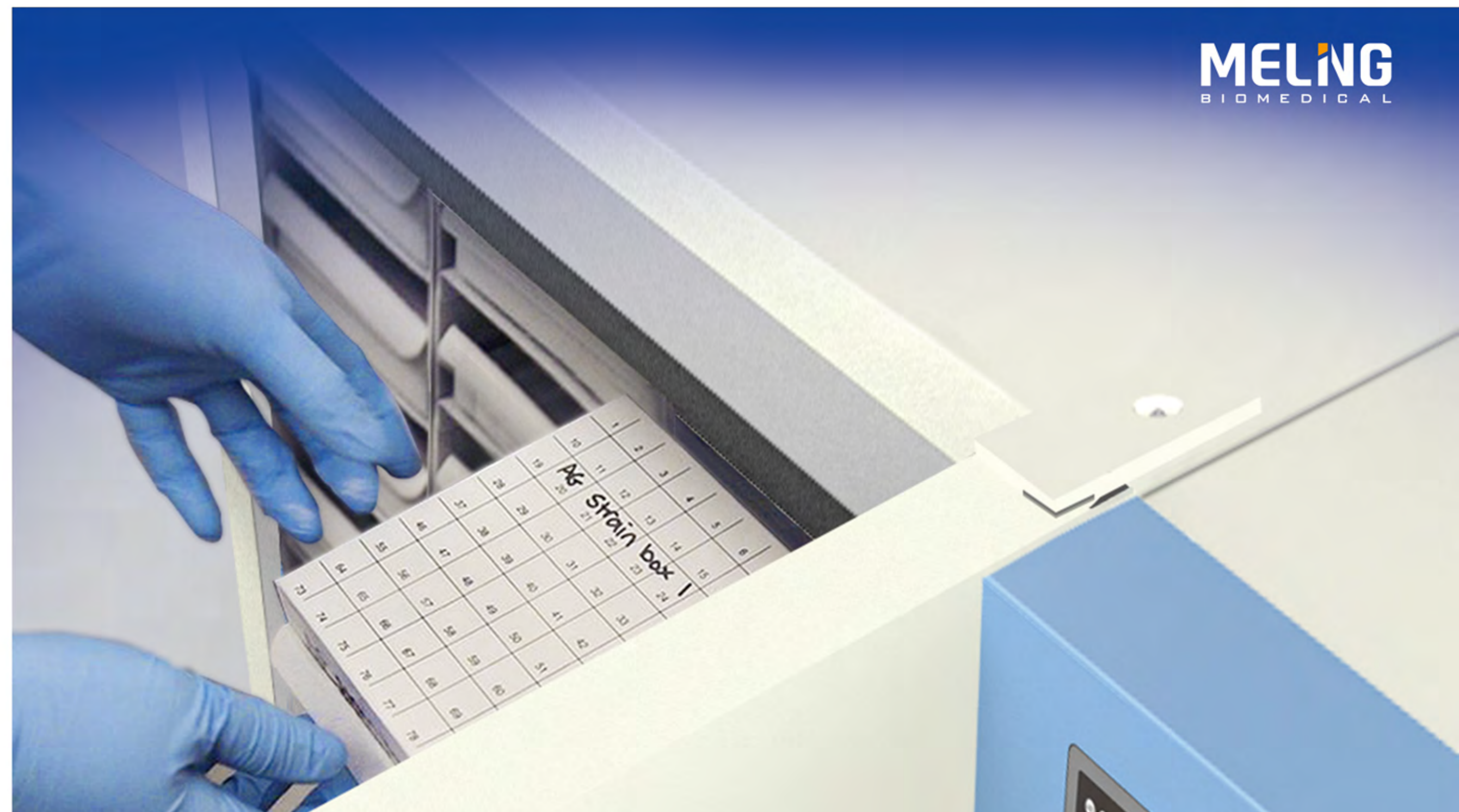


Product Name		-86°C Ultra-low Temperature Freezer			
Model	DW-HL50HC	DW-HL100HC	DW-HL218HC	DW-HL340	
Cabinet Type	Upright	Upright	Upright	Upright	
Capacity(L)	50	100	218	340	
Internal Size(W*D*H)mm	305*425*430	450*450*514	470*582*768	470*578*1250	
External Size(W*D*H)mm	951*700*757	1066*742*820	862*976*1555	755*895*1982	
Package Size(W*D*H)mm	1110*840*935	1200*863*991	983*1073*1741	895*1003*2186	
NW/GW(Kgs)	104/156	145/189	218/255	208/277	
Temperature Range	-40~-86°C				
Ambient Temperature	16-32°C				
Cooling Performance	-86°C				
Display	Digital display				
Compressor	1pc				
Cooling Method	Direct cooling				
Defrost Mode	Manual				
Refrigerant	HC			Mixture gas	
Insulation Thickness(mm)	110	90, R:115	155	L/R:110,B:130	
External Material	Cold rolled steel sheet				
Inner Material	Stainless steel				
Shelves	1(stainless steel)	1(stainless steel)	1(stainless steel)	3 (Stainless steel)	
Door Lock with Key	Yes				
External Lock	Yes				
Access Port	1pc. Ø 25 mm				
Casters	4				
USB interface	Yes				
Alarm	10				
Power Supply(V/HZ)	220-240~/50				
Rated Current(A)	5.42	5.57	6.53	5.32	
Standard Accessory	RS485, Remote alarm contact				
Options Accessory	CO2 backup system		Chart recorder, CO2 backup system		

Product Name		-86°C Ultra-low Temperature Freezer			
Model	DW-HW50HC	DW-HW138	DW-HW328	DW-HW668	
Cabinet Type	Chest	Chest	Chest	Chest	
Capacity(L)	50	138	328	668	
Internal Size(W*D*H)mm	430*305*425	490*470*582	1200*470*582	1200*815*666	
External Size(W*D*H)mm	650*606*1080	1328*890*1025	2038*890*1025	2008*1180*1041	
Package Size(W*D*H)mm	788*720*1283	1470*990*1241	2193*1003*1256	2145*1305*1234	
NW/GW(Kgs)	74/120	200/262	280/328	352/509	
Temperature Range	-40~-86°C				
Ambient Temperature	16-32°C				
Cooling Performance	-86°C				
Display	Digital display				
Compressor	1pc	1pc	1pc	2pcs	
Cooling Method	Direct cooling				
Defrost Mode	Manual				
Refrigerant	HC	Mixture gas			
Insulation Thickness(mm)	110	152	152	130	
External Material	Cold rolled steel sheet				
Inner Material	Stainless steel				
Foaming Lid	1	2	3	3	
Door Lock with Key	Yes				
Access Port	1pc. Ø25 mm	1pcs. Ø 40 mm	1pcs. Ø 40 mm	1pcs. Ø 40 mm	
Casters	4	4	6		
USB interface	Yes				
Alarm	9				
Power Supply(V/HZ)	220-240~/50		220-240~/50		
Rated Current(A)	5.48	5.78	5.6	9.5	
Standard Accessory	RS485, Remote alarm contact				
Options Accessory	Chart recorder, CO2 backup system		CO2 backup system		



### Zhongke Meiling Cryogenics Company Limited

No 1862 Zishi Road, HeFei City, AnHui ,P.R.China  
 Tel:+86 551 64317378 Fax:+86 551 62219667  
[www.melingbiomedical.com](http://www.melingbiomedical.com)  
[overseas.marketing@zkmeiling.com](mailto:overseas.marketing@zkmeiling.com)  
[zkmeiling@zkmeiling.com](mailto:zkmeiling@zkmeiling.com)

## -86°C ULTRA LOW FREEZER

- |           |            |            |          |
|-----------|------------|------------|----------|
| DW-HL50HC | DW-HL100HC | DW-HL218HC | DW-HL340 |
| DW-HW50HC | DW-HW138   | DW-HW328   | DW-HW668 |

\*The model, parameters and performance specified in this brochure may be changed without prior notice because of product upgrading.  
 \*There may be differences between the product images shown in this brochure and the actual products. When you are buying any product, please check the actual product.

# -86°C Ultra-low Temperature Freezer

EN ISO 13485

ISO 9001

ISO 14001

ISO 45001



DW-HL50HC



DW-HL100HC



DW-HL218HC



DW-HL340



DW-HW50HC



DW-HW138



DW-HW328



DW-HW668

## Product Advantage

### User-friendly-Ergonomic Design

- Ergonomic door handle located at waist level is needed to open and close the freezer door, meanwhile equipped with vacuum vent with plunger to gain immediate access to your freezer.

### VIP Vacuum insulation panels

- Vacuum insulation panels allow for increased internal capacity with the same footprint as traditionally foamed freezers as well as it ensures excellent temperature stability.

### Multiple separate compartments

- Inner doors are gasketed as well as insulated creating 4 separate compartments minimizing cold loss while you access your samples.

### Access port

- Φ 25mm access port, convenient to monitor /test/ back-up device.

### Human-oriented

- Equipped with handle, easy to open the door;
- The dual-door design, including the inner door and the outer door, locks the cold air and ensures long-term thermal insulation inside the cabinet.

## Product Details



### Extra Security for Sample

- Optional built-in CO2 backup system for extra security for your valuable samples.



### Multiple audible and visible alarm system

- Audible and visible alarm system, multiple alarms including high temperature alarm, low temperature alarm, power failure alarm, low battery alarm, sensor error, door ajar alarm, high ambient temperature alarm, communication failure alarm, battery power detection failure alarm and condenser overheating alarm etc.



### Excellent temperature uniform

- Forced air cooling circulation technology with coil evaporator maintains a uniform temperature throughout the chamber.



### Trusted SECOP brand compressor

- German famous brand compressor - SECOP maintain a reliable -86°C ultra low temperature environment, that increases efficient sample storage.

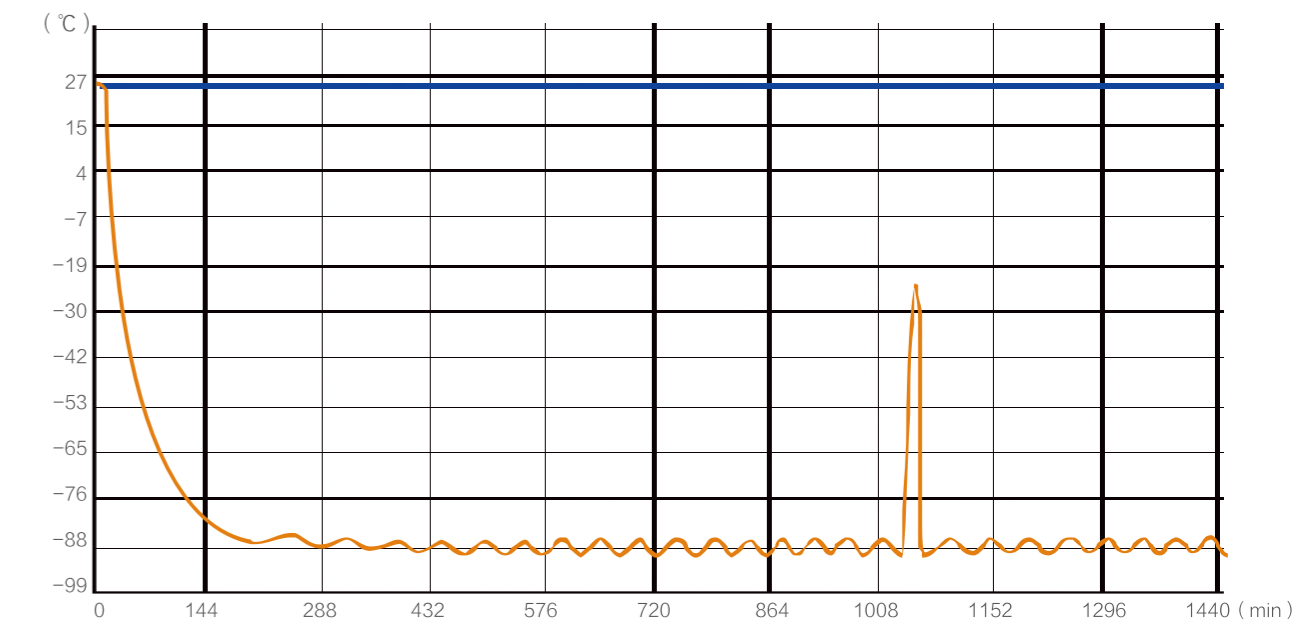


### Environment-friendly Product

- Advanced production process as well as excellent production quality ensure minimum pollution landfill.

## Performance Data / Cooling Curve

Ambient temp: 25 °C    Set temp: -81°C    No load



Cooling 128 minutes down to -81°C,  
Temperature recovery to -75°C in 34mins after door opened for 1 min